

RHYC

anchor watch



Cruise Report – March's St. Patty's Day @ Des Moines

Cruise Report- St Patrick's Day Cruise

The St. Patrick's Day Cruise was a huge success. This was the first time the club had a cruise at the Des Moines Marina and the consensus was we will add this on to the list for future cruises. The weekend was very mixed with rain, wind and calm seas. Friday was very windy when the majority of the boats arrived. The marina crew was great and helped 16 boats into their slips safely. We had a total of 50 people attending the cruise with several people that came by car and/or stayed on a boat with friends. We had three new members that attended the cruise and given their packets Saturday night. They were Mark & Linda Carpenter, Vaughn and Jill Weedman and Mark & Brenda Gudmunson. Welcome to the club! We also had Rick and Kelli Werth attend as prospective new member's friends of Neil & Noreen Millen. We started out the weekend with a Friday night gathering in the enclosed and heated tent on the dock. We had a wonderful time sharing great appetizers and catching up with each other. Saturday morning everyone enjoyed breakfast scrambles and fruit making plans for the rest of the day. The marina provided a van to take several women to Christine Alexander's outlet store and many came back with new purchases. The rest of the attendees spent time doing boat projects and exploring Des Moines. Thanks to Mary Mehlum for having the Ship Store open for a few hours.

Late afternoon everyone started preparing for the Best Hat Contest and Best Drink Contest. We had the Best Hat Contest first and what a variations of St. Patrick's Day head gear. The judges had a difficult time but awarded the kids 1st prize to Noah, friend of the Mosby's and the Adult 1st prize went jointly to Ray & Sue Biggs. The drink contest was very interesting with lots of green drinks many having Crème d menthe, Irish Cream, Jameson whiskey and of all things Lucky Charms. It was a difficult decision but 1st prize was awarded to Chris Williamson with the Lucky Charm drink and

Deadline for next newsletter.....April 19th

2nd place was awarded to Patrick Gill with a shot glass drink. We had a Pot Gold raffle with Tom Miner winning the whole pot of money!

The rain started just as we began Saturday night's dinner but didn't affect the great food. Everyone enjoyed corned beef, cabbage, carrots, Sheppard's pie, salad, soda bread and ice cream with all the trimmings. Many people commented it was the best corn beef they had ever tasted. Thanks to Chris Benson for his great cooking. After dinner we had Colors and many thanks to Glen Dodge for improvising on the flag pole and to Glen Dodge, Phil Freund and Dave Mehlum for weathering the rain during the Colors Ceremony. Sunday morning we had cinnamon rolls, muffins, breakfast bake and fruit to give everyone energy for the trip home.

Attendees included: Chris & Sandy Benson, Ray & Sue Biggs, Mark & Linda Carpenter, Glen & Liz Dodge, Jeff & Beth Drake, Phil & Debi Freund and their guests, Mark & Brenda Gudmunson, Patrick and Miriam Gill, Harry & Terri Johnson, Pete & Linda Jung, Bob & Verna Maruska, Dave & Mary Mehlum, Neil & Noreen Millen, Tom & Chris Miner and granddaughter, Bill Moffett, Paul & Stephanie Mosby, Noah, Hayley and their friends Noah & Lexie, Ty Rice, Frank & Amy Sherwood, Dave & Janel Silver, John & Lynn Sipkens, Ken & Cindy Spiker, Vaughn & Jill Weedman, Rick & Kelli Werth, Chris & Willow Williamson. Also in attendance was our Past Commodore from 1969, Bill Connell Sr. who got up and spoke a few words. Thanks for coming Bill.

The cruise team wants to thank everyone that helped them throughout the weekend especially the boats that offered there ovens. We hope that everyone had a great time and was filled with good food, fun and getting together with friends.

Cruise Team,
Chris & Sandy Benson
Dave & Mary Mehlum

ommodore's Report



We had a wonderful cruise to Des Moines last weekend. The event was fun and we all appreciated the efforts of Chris and Sandy Benson. The food was delicious. A few arrived on flat water on Thursday but most boats arrived on Friday in significant wind and rough waters. With the efforts of those already present and the fine staff at the marina there were no incidents- thankfully. The homeward cruise was easy, but with some rain and low clouds but no wind.

April is rapidly approaching and we will have our Annual Business Meeting the weekend of April 11-13 in Everett. This meeting is the one where our bridge gives reports to the members, the budget is submitted for approval and we also vote on significant issues such as amendments and alterations in fees and dues. While we do not yet anticipate a dues increase, we have a proposal for changes to our application fee. Please see the article below in this Anchor Watch.

We remain without a Cruise team for three cruises. Please step up and volunteer for

Memorial Day, July 3rd, or October. You will be assured of helping hands to get that done. Call Peter Jung to ensure that we have these cruises covered. We continue to encourage everyone to bring in new applicants to join us in the fun activities we participate in as members of this fine club. I think back to the year Mary and I joined RHYC and all the friends we have made. These memories are treasures and we know that we will have more in the years to come. With the beginning of Spring, we begin clean up both at home and on the boat. Enjoy this season of new leaves, flowers and improving weather.

Respectfully,
Dave Mehlum
Commodore



ice Commodore Report



Our first cruise on the water for 2014 was another excellent St. Patrick's Day celebration. Winter was still at hand for the Friday arrival and some "bumpy" cruising to Des Moines Marina but once tied up to the dock the celebrations came into full swing. On Saturday the pre-dinner Irish drink competition was lively and although they all had a hint of green with the imagination and ingredients offering many a surprise. Congratulations to the "fruit loops" winner! The cruise team of Chris & Sandy Benson and Dave & Mary Mehlum treated us to a wonderful Irish dinner of corned beef and cabbage with all the fixens! The travels to home port on Sunday were a reminder that we are on a record setting pace for rain in March.

We are in the process of finalizing the 2014 club membership numbers and received notification that 13 of our active members have decided to withdraw and move in a new direction. On behalf of the club, I would like to thank each one for their support and wish them all much happiness and a fond farewell. If you happen to see them out on the water please extend a hearty hello on behalf of RHYC. The following is a list of those that have withdrawn their membership in 2014.

Larry & Randie Fockler PACHELBEL	Warren & Inge Geri DOLCE VITA	Douglas & Melaney Grenz CURRENT' SEA
David & Mary Haywood ISLAND DREAMS	Will & Bev Huisingh SILVER SEAS	Jim & Marcia Krell CHINOO
Robert Marcovitch COTE-DES-NEIGES	Lynn & Kathy Montgomery LIKELY LADY	Pat & Jeane Moroney MISS D'LITE
Keith & Jodi Olson M II	Harry & Verna Orr BUSHWACKAH	Duane & Susan Waltos TREASURE
Norm & Lori Weaver KNOT TOO SHABBY		

Annual membership dues not paid by January 31st of each year are considered delinquent. Per the club bylaws, members may be suspended or terminated for failure to pay dues in a timely manner. The board has taken action on those members with delinquent dues. I will present the final membership numbers at the April business meeting.

In March, the Board approved four new members to the club. Please see the New Members section for introduction of members Vaughn & Jill Weedman, Mark & Linda Carpenter and Mark & Brenda Gudmunson. New members Todd & Kristen Carden will be introduced to the club at the next cruise they attend. Published applicants Mike & Charlene Gustafson will be eligible for a membership vote upon completion of their qualifying cruise.

At the March Board meeting the trustees discussed a number of options to promote new membership in the club. The long term vitality of the club will benefit from a diverse membership profile and the membership special should provide an incentive for younger applicants while maintaining our very reasonable fees to the entire boating community. The membership drive special is focused on attracting younger members of the boating community to join RHYC.

In accordance with the bylaws; the Board unanimously approved a limited time membership drive special. Beginning April 1st and continuing through July 31st, the active member application fee will be based on the primary applicants' age (rounded to the nearest year) times \$10 up to a maximum of \$400. Application fees for associate membership will remain at \$50. Online application forms to be updated for this limited time application special.

Based on information available to the club, current published applicant fees are consistent with the application fee special.

Please continue to look for opportunities to share news of the application fee special and invite fellow boaters to submit an application. The best way to invite new boaters to become members is person to person. Ask your marina neighbors and friends to join the club and enjoy all RHYC has to offer. If you would like to have additional informational flyers about the club or an application, send me an email and I will send them your way.

If you need any help with the application process please don't hesitate to contact me. If you are a sponsor of a new applicant, it would be great to send a quick email to me when the application has been submitted by mail so we can follow up on it as soon as possible.

Respectfully Submitted,
Bob Maruska
Vice Commodore

New Members

The Bridge has taken action and the following have progressed from published applicant to active membership. It is with great pleasure that we introduce our new members. Please take time to meet them at future cruises and make them feel welcome.

Vaughn & Jill Weedman
2011 65' Selene
Anacortes, WA
"Paige Marie"
Sponsors: Patrick Gill & Ray Biggs

Mark & Linda Carpenter
2004 65' Pacific Mariner
Seattle, WA
"C-Jewel"
Sponsors: Bill Moffet and Greg Swain

Mark & Brenda Gudmunson
1992 32' Bayliner
University Place, WA
"Gudies Getaway"
Sponsors: Jeff Drake & Ken Heany

WELCOME TO THE CLUB!

Odds and Ends

Burgees and Handbooks: If you sell your boat, do not leave the burgee or club handbook on board. If you resign from the club, remember your burgee may not be displayed on the open water. You may return it to the club or perhaps frame it for your den or office room wall. It's unfortunate but we've heard about non members and non member boats out there cruising under the RHYC colors.

Burgee Sales: If you need a new burgee to spruce up your boat before cruising season, please contact me or see me at an upcoming cruise and we can get you a new one.

Bob Maruska
Vice Commodore & Membership Chair



Rear Commodore Report

As you get the boat ready for the summer season, I have been doing the same with your outstations and reciprocal locations. I have not, though, visited our outstations this year. Please let me know, if during your visits, you find anything out of place or in need of repair. Also if you determine there is a need to contact the port at one of our outstation locations, please limit it to congenial comments. I will take on the job of processing your comments that need further port action.

Your Board is continually evaluating the quality of our reciprocal clubs offerings. We feel it is important that for the clubs that we allow use of RHYC offering, that we receive comparable return. Currently we provide one of the best reciprocal site offerings all of the Salish Sea clubs. Visit the other clubs and let us know your experience.

Other club business, I received a very prestigious award at the St. Patty's day cruise. I have since discovered that I am not a worthy recipient of this award. It was claimed that per the Polish Navy's code of conduct paragraph 3456.a.321.b.c(987654321) the vessel Magic Moment, while moored during a joint practice, did not correctly display said burgee as outlined by the afore mentioned section of the code. I have carefully reviewed all pertinent sections of the aforementioned code and find that the charging parties missed the all important exceptions section. In this section paragraph 9876.12345.c.3.z(123456789) it is specifically stated that burgees may remain furled 24 hours per day when moored, when done so for the sole purpose of making the vessel fully secured and quiet for the incidental and sometimes unscheduled naps required by all of the old farts on board. Therefore the crew of Magic Moment, although saddened by the thought, would be willing to return said award to the granting party if deemed prudent by a vote of the membership. I will gleefully, I mean woefully, accept the positive outcome of a movement and second, calling for such vote at the next fully sanctioned club cruise.

Glen Dodge RHYC-RC



Treasurer's Report

Hello RHYC Members,



We have an annual tax return that was due March 15, 2014. The tax return was prepared and filed on March 3 and I will have copies of the return at the annual meeting in April in Everett. A reminder to everyone trying to plan for cruises – we are a 501(c)7 which is a Not for Profit Social club. As such, donations made by organizations to our club are not tax deductible to them. There has been confusion with this in the past so if you have any questions please email me so I can explain why donations made to our club are not deductible as a charitable contribution to the group who donates.

The RHYC Clubs finances are in good order (we have money) but really need everyone to work on recruiting new members. We lose members every year for various reasons and to keep our club healthy we need everyone to actively recruit new members. We have monthly financial statements and we will be presenting an overview of the clubs finances and budget at the annual business meeting in Everett. You will see that a big part of our expenses are outstations and reciprocal moorage. To keep our outstations and reciprocal moorage, we have to maintain a strong membership base. We all know what a great club RHYC is so share information about our club with your boating family and friends and encourage them to come with you to a cruise to learn about our club. The next cruise is the annual business meeting in Everett April 11 – 13th. Please get signed up soon so that our cruise team can make the final arrangements for a great cruise weekend in Everett. If you are unable to attend the cruise you should still come to the annual meeting which is on Saturday April 12 (usually around 2:00 but watch for more details).

Thanks

Michelle Nelson
RHYC Treasurer

Secretary Report



John & I had the opportunity to join in the fun at the St. Patty's Day cruise at Des Moines. What a venue! They were obviously very gracious in working with our fabulous cruise team. They delivered our "Starbucks" coffee in the morning, newspapers and provided white linen for our tables. I was expecting silver for our table service next! They seriously have done an amazing job adding their venue as a new destination for cruisers and yacht clubs alike. Our cruise team produced wonderful Irish food and lots of fun. We hated to leave!

Lynn Sipkens, Secretary

P ROPOSED RHYC BY-LAWS CHANGES



In accordance with ARTLCE XIII of the RHYC By-Laws the following proposed amendment is republished for membership review. This proposed amendment was recommended and confirmed by unanimous vote of the Board and will be voted on at the April 12, 2014 General meeting. Results of this vote will be published in the April Anchor Watch.

By-law change #1

Since there is the possibility that this amendment was excluded at the November membership vote, the board decided to resubmit the following proposal:

Proposed Change to by-laws indicated by words in **red**
ARTICLE XIII: AMENDMENTS

C. Written notice of proposed changes in bylaws will be provided to the membership not less than ten (10) days prior to said meeting in the newsletter or by special mailing. Special mailing may be by email.

By-Law change #2

ARTICLE V: APPLICATION FEES, DUES AND ASSESSMENTS

Section 4

Annual membership dues shall be due on January 1st of each year. Any such dues not paid by January 31st of each year shall be considered delinquent. Annual membership dues not received by January 31st of each year shall be assessed a late fee of \$50. Special assessments shall become due on the assigned date as voted and approved by club membership. Any such assessments not paid within thirty (30) days of the due date set for such payments shall be considered delinquent.

The purpose of this proposed by-laws change (noted in red) is to encourage timely payment of annual membership dues and assess a penalty for late payment.

IMPORTANT NOTICE TO THE MEMBERSHIP OF RHYC

The demographics of yachting in the United States are changing. In particular, many of the current members of RHYC are described as “baby boomers” in the modern vernacular. We Boomers (and everyone else!) are inevitably marching to the right along our time lines. And, much as we go kicking and screaming in that direction, our ability to participate in yachting inevitably declines as we take that journey. This trend is absolutely mapped throughout the entire marine recreational marketplace, particularly in the United States. Fewer and fewer of us have the wherewithal to own, maintain, and operate boats typical of RHYC. As we age-out of boating, we tend to opt out of related organizations, such as yacht clubs.

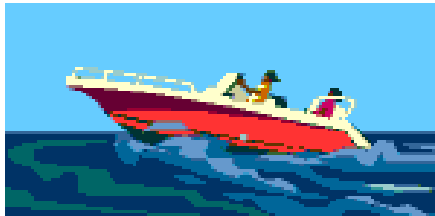
The Board of Trustees believes this to be a fundamental issue underlying our ongoing decline in membership for RHYC. The general boating population is simply getting older.

Additionally, the poor state of the economy in the last few years has inevitably taken its toll as well. Again, the demographics would suggest the follow-on generations (Gen X, Gen Y, etc) do not show the income potential nor retirement security enjoyed by us older folks. In fact, Boomers may well be the wealthiest generation for years to come. All of these demographics bode ill for retaining RHYC membership. And RHYC is not alone.

Therefore, to assist in attracting new and younger members, the RHYC Board of Trustees recommends the following change in application fee methodology for approval by the membership:

“The active membership application fee shall be determined as \$10 times the primary applicant’s age (rounded to the nearest year) not to exceed a maximum fee of \$400.”

In accordance with Article V: APPLICATION FEES, DUES AND ASSESSMENTS, Section 2, A majority vote by the members of the Board of Trustees will be required to make such recommendation for changes to the membership application fees, dues and assessments. A majority vote of at least two-thirds of those members eligible to vote and attending a meeting for this purpose will be required for approval of the recommendation. Notice of at least (10) days in advance of such meeting must be given to all club members. This notice may be in the form of a separate mailing to each member or by an announcement in the Club newsletter that such meeting is to take place.



Fleet Captains Report



Many, many thanks to the St. Patrick's Day Cruise Captains Sandy and Chris Benson, and their able assistants Dave and Mary Mehlum. REALLY tasty corned beef and cabbage, Sheppard's Pie, breakfast treats, Starbucks coffee, (I could go on and on)! Despite an ample bribe extended by an unknown provider of Celtic Thunder for the Irish drink contest, the judging team determined Lucky Charms floating in a green "glog" was far superior, and awarded Chris Williamson 1st prize. And lots of folks said the stuff was actually good! Who said bribery will get you anywhere?

Whoever heard of a Yacht Club Fleet Captain without a boat? Well...as RENDEZ-VOUS finally got fed up with my abuse and neglect and left me for her next owner, RHYC is gonna find out! I'll still be making best effort to attend each remaining cruise this year, and support the cruise teams as best I can. Fear not! I can still deliver the chafing dishes and the coffee pot. Not so much the coffee swizzle sticks, however. I've got a little car.

I've settled on Pleasant Harbor for our October Columbus Day cruise. For those unfamiliar with Pleasant Harbor, it's located down the Hood Canal, about 45nm from Shilshole. Since my last visit in ~1999, the docks have been replaced with concrete/trex, and are of excellent quality and repair, and there is plenty of space. The pool and hot tub have been refinished, and both will be heated for our visit. The pool area has a covered cooking area and plenty of sit-down space for BBQs, gatherings, etc. There is a new office/restaurant/heated upstairs sitting area under construction, due for completion in early July. If we get a winter crab season, crabbing is excellent in the area. Dingy rides to the Dosewallips State Park with hiking and beach explorations available. And, for those boatless amongst us, a beautiful 6800 sq ft home for rent on the Marina grounds. 4br + kitchen, outdoor BBQ, etc. \$100 per night per double room and en-suite bath, \$450 per night for the whole house. All in all, a very pleasant venue. Columbus Day is a federal holiday. However, for those unfortunates that have to work on that day, hopefully you can persuade your boss you need a mental health vacation day, and amortize that 45nm hike over the three-day holiday. While I haven't found a cruise team yet, I hope to ensure ample vittles, ample libations, ample activities **for the whole family**, and ample smiles and camaraderie for all. I'm looking forward to it!

As we will be reminded by our Board at our up-coming Business Meeting in Everett on 11-13 April, our membership numbers are declining. We are all admonished to actively recruit new members for RHYC, as membership growth is needed to move us forward. To make this task (hopefully) easier, I am going to encourage my up-coming Cruise Captains and Teams to make each and every cruise **family friendly**. By that, I mean that we need to make sure that younger members are encouraged to attend with their families, and there are activities that appeal to the younger set. We wrinkles are content to visit with old friends at the dock, partake of liquid refreshments, eat great

food, etc. We normally don't need much entertainment. Well, tain't so much for the very folks we need to encourage to both join our club, and attend our cruises. So I'm going to dig out the wooden horses for some dockside horse races, find some crabs to saddle up for crab racing, maybe organize something like a dinghy poker run, maybe some gutter sail boat races, etc. Many of these activities are a hoot for us wrinkles as well, and by getting and keeping the younger families engaged, we ensure the longevity of RHYC into the future for all of us. Put on your thinking caps! Suggestions welcome!

I am reminded by each of our past Cruise Captains of the importance of early signup for cruises. Particularly when there is a facility fee imposed on the Club, such as Elliott Bay for the Sweetheart Cruise at Valentine's Day, this fee MUST be made up by the cruise fees. The Cruise Captains have to make their best guess as to the number of attendees, and budget accordingly for the facility, food, entertainment, etc. Everyone wants best value for their cruise fee dollars. However, when the signups are late coming, the Cruise Teams often have no choice but to reduce their expenditures for discretionary expenses such as food in order to stay under budget. If the numbers increase late in the signup period, everyone is faced with less-than-desirable food selections (for instance), simply due to lack of timeliness in signups. So please, please, SIGN UP EARLY for events! You'll all get more bang for your bucks.

New subject: times, they are a-changing. Cruises to venues that, only two years ago, allowed RHYC cruises with NO permits, NO insurance, and NO paid bartenders are now requiring just that. Marinas that should welcome the \$6K-\$8K in revenue provided by an RHYC cruise are now charging us a "fee" for the privilege of reserving space at their docks. Restaurants that used to allow RHYC to reserve a room in its entirety for brunch, now do not, and will fill un-used seats with outside guests to fill the room. Your Fleet Captains have some serious thinking to do regarding cruising venues in the future. We can continue with the status quo, but will then have to accept inevitable increases in the cost of the cruises to pay for same. Or, we can begin restricting our venues to those marinas that don't charge such usurious fees, or we can increase the number of cruises where we anchor-out. Each option has plusses and minuses. So much for this rant. Any suggestions to counter this trend are encouraged.

Speaking of cruises-**I NEED A CRUISE CAPTAIN AND TEAM for the Memorial Weekend Cruise and Wagon Wheel at Longbranch Harbor, May 23-26.** Wagon wheel cruises are a ball, there's plenty to do in Longbranch, and I need some inventive, fun-loving cruisers to step forward and make this cruise happens. And I'm going to dig up some junior makey-learn wheel-persons to become Wheelmasters by gluing them to the hips of our veteran Wheelmasters as they put together and take apart the wheel. Watch Yoda as he adroitly positions each arriving boat in the wheel. Watch Yoda instruct Grasshopper how to untangle anchor chains upon departure. Learn new curse words. Become inventive on the VHF! Satisfy your yearning to be a tug captain as you nudge errant boats into the wheel with your dinghy! Yee-haw!

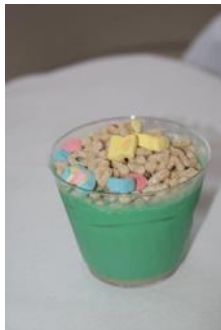
Lastly, the ON-THE-MOVE CRUISE. Don't forget, some long-range planning is in order to participate in out of town events such as the On-The-Move-Cruise in August.

Lastly, the ON-THE-MOVE CRUISE. Don't forget, some long-range planning is in order to participate in out of town events such as the On-The-Move-Cruise in August. Tom Miner will be leading us north to Gorge Harbor, the Octopus Islands, and Thurston Bay. Put it on your calendar! Grab the family, your water toys, and your boat for a venture further afield this summer. We are a cruising yacht club, you know! Please see Tom's attached agenda, and call NOW to make your reservations for the summer.

Regards,

Peter A. Jung
Fleet Captain, 2014

More pictures from St. Patty's Day



1st Prize Chris Williamson



2nd Prize Patrick Gill



Chloe's starfish



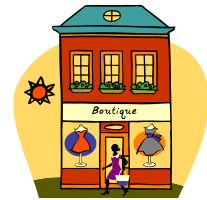
Past Commodore/Trustee

No Report.



Ship Store Report

No Report



Sunshine Report



We have heard from Inge Geri that Warren continues to improve from the stroke he had last year. They both attended the Icebreaker Cruise, but decided to drop their membership in the club because of health reasons.

John Sipkens recently underwent a procedure to help his heart. This went well and he was at the St. Patrick's Day Cruise with Lynn.

A note from Glen Dodge after speaking with Jack Gordon: Therese went back for another operation 2 weeks ago to correct what didn't take hold from the Nov. attempt. She is feeling so much better this time but now Jack is doing chemo for his own ailment although reports he is handling it well. They are doing their best in tough times.

**1998 372
Silverton Aft Cabin Motor Yacht
For Sale
\$145,900**



Twin Diesel Cats 3116 800/hrs.
Bow & Stern thrusters
Raymarine Auto pilot
Raymarine C120 12in screen with GPS & AIS
Raymarine DMS 250 Depth sounder/fish
finder
Raymarine 2KW Radar Dome
Uniden UM625C Color VHS/Hailer with
wham x4 wireless vhf mic
2000Kw Outback Inverter
8Kw Kohler Generator
KVH Satellite dish
Auto Windless with digital rode readout
Upgraded cherry wood cabinets and stairs

Upgraded carpet and hardwood floors
Upgraded push button Tecma fresh water
toilets
Three zone reverse cycle heat and air
Denon stereo with sub-woofer
Bose outside speakers
Wet bar and ice maker on Sundeck
12 Ft AquaPro Center console dinghy with
30hp Honda 4 stroke engine
King galvanized trailer for dinghy
New Canvas and bottom paint in 2012
Contact: Gil Fetzner 253-229-8218
Email: gaf@centurytel.net

For additional information and pictures go to <https://sites.google.com/site/372silverton/home>
Call Gil Fetzner @ 253-229-8218, gaf@centurytel.net

REFLECTIONS IS FOR SALE

61' 1987 Tollycraft

Meticulously maintained
Call today for pre-brokerage pricing

\$469,000

206-714-9970



JOIN US AT "CLUB ROCHE"
Also known as the annual business meeting



April 11-13, Port of Everett Marina
Featuring cocktails, a full sit down dinner, and raffle after the meeting
Breakfast and Liquid Refreshments Saturday
Music and Dancing to 50's music after dinner
Dress in your fanciest 50's cocktail attire.

Register with Nat & Linda Collier by March 21 for \$30.00 per person and up until the deadline of April 1 for \$35.00

Name _____ Boat Name _____ Length _____ beam _____
make check to RHYC amount _____

Please Remit to Nat & Linda Collier
65 Pine St #101
Edmonds, WA 98020

Moorage can be taken care of with the Port after arrival, rate=\$.75 /foot power free, what a deal.



Lethal Luau

*A Murder Mystery Weekend
June 13th to 15th*

Cruise Captains: Lynn & John Sipkens
Cruise Team: Mark & Shari Pywell



So you think you can act? Now's your chance to show your stuff!

We need 3 men and 4 women to join our Fleet Captain, Pete Jung as the primary actors for this weekend. If you are chosen you will be given your character in plenty of time to get your mojo on. Everyone else is detective working hard to solve the Mystery. Don't be shy, help lead your fellow boaters through the mystery!

You will be in character starting Saturday morning, dressed in the part of your character and having a great time stumping the detectives.

**Sign up now and then wait by your email to see if you get the part!
Who will you be?**

Sign up by June 6th. Mail reservation form & payment to:
RHYC c/o Lynn Sipkens
5834 Ward Ave NE #8
Bainbridge, WA

Cruise Fee: \$25 per person (children under 12 \$10)

PRIZES FOR: BEST ACTRESS - BEST ACTOR & DETECTIVE!

Questions or information call 206-436-9217
Itinerary to follow in April's Newsletter

RHYC Lethal Luau Registration Form

Name(s): _____ Total # Attending: _____ # Children: ____ ages: _____

Arrival date: _____ Car [] Boat [] Boat Name: _____ Length: ____ Beam: ____

Special Needs (i.e. Allergies, moorage): _____



RHYC Bremerton Blackberry Cruise



**Roche Harbor Yacht Club Members Labor
Day Weekend 2014**

**We will be celebrating together at the
Bremerton Marina and the Blackberry Festival
Aug 29 to Sept 1**

The Bremerton Blackberry Festival is held each
year on the Labor Day weekend, rain or shine.

Festival hours are 10am to 7pm on Saturday,

10am to 6pm on Sunday and 10am to 5pm on Monday.

You will find several activities going on all three days of the weekend.
Blackberry Run, Boardwalk full of vendors, lots of entertainment, Car
show and lots and lots more....

**This is a weekend that you definitely will not want to miss. RHYC
only has room for 25 boats so please get your check
to us ASAP to reserve your spot at the marina.**

**The sooner the better because most of your cruise team will be
cruising the Islands the month of August and would like to get
everything done before we leave.**

Send Down payment of \$25.00

RHYC PO Box 1825

Belfair Wa 98528

Your check will be held until the event.

Final details will be posted at a later date.

If you would like to be on our cruise team please

Call Phil or Debi Freund 360-509-0606 d-freund@live.com

Cruise Team Gloria and Pertis Johnson Mike and Jan Croke



Desolation Exploration RHYC On The Move Cruise August 7-14 2014

Join the club on August 7th and 8th at Gorge Harbor Resort
Call and make your reservations to make sure you have a spot on the dock. We have the beach bar-b-que area reserved for the 8th for a bring your own meat and pot luck dinner.

Contact Gorge Harbor Marina Resort!

Please email us for reservations and requests at: reserve@gorgeharbour.com

Gorge Harbour Marina Resort

PO Box 89

Whaletown, B.C.

V0P 1Z0 Canada

Tel: (250) 935-6433

Fax: (250) 935-6402

August 9 and 10 Anchor and raft up at Octopus Island Provincial Marine Park.



August 11 and 12 Anchor and raft in Thurston Bay Provincial Marine Park

August 13 and 14, Homfrey Sound Lodge. **You must call** and make reservations ASAP as the dock space is limited.

Contact 604-740-6032

info@homfraylodge.com



Each year our boating community has the opportunity to give back with the Leukemia Cup Regatta. This is a sailboat “race” that is combined with a fundraiser for the Leukemia and Lymphoma Society. Elliot Bay Marina is one of the great sponsors of the event.

Please join Jeff and Fran on our 3rd Annual Leukemia Cup Regatta! Although not Leukemia, Jeff has been so fortunate to have received cutting edge care and treatments with his cancer and we love to pay it forward! What helps one helps all! We've seen the results of new treatments with a close friend who had AML and the way it can save lives! Too many of our friends are now facing the cancer journey and we want to help in any way we can. Contribute to our team if you'd like or just send us positive thoughts on race day! Thank you!

We'll proudly be flying the RHYC burgee on race day!

The Leukemia & Lymphoma Society's Leukemia Cup Regatta: finding better treatments and cures for blood cancers so patients can live better, longer lives. Please use the link in this email to donate online quickly & securely. You will receive an email confirmation of your donation as soon as it is made. I thank you in advance for your support which will make a difference in the lives of thousands of patients battling blood cancers. We really appreciate your generosity!!

<http://www.leukemicup.org/pages/wa/sea14/JSharp>

Thank you very much!
Fran and Jeff Sharp
S/V Salpare





ROCHE HARBOR YACHT CLUB

2014 SCHEDULE

Date	Location	Activity	Cruise Teams
Dec 31-Jan 1	Everett, WA Bremerton, WA	New Year's Eve Parties	Unofficial do-it-yourself cruises. Make your own reservation(s) at Everett Marina, and with Everett YC for dinner on Tuesday, Dec 31, 2013 for the EYC New Years Party. Reservations due by Weds, Dec 4. \$80 single, \$160 couple. A number of members are going to the Admiral Theater in Bremerton for a Comedy Show, Dinner & Dance. Some are going by boat, some by car (as it's close to the ferry) and staying in a local Hotel. Anyone who wants' to join us should look for tickets to the Admiral ASAP. Note: no cruise captains or teams required for these DIY cruises.
Jan 12	C.I. Shenanigans Tacoma, WA	Ice Breaker Brunch	Cruise Cpts: Jeff and Fran Sharp
Feb 8	Elliott Bay Marina 2601 W Marina Place Seattle, WA	Sweetheart Dinner	Cruise Cpts: Steve and Michelle Nelson Cruise Team: Alan and Sue Boudreaux
Mar 14-16	Des Moines Marina	Saint Pat's Cruise	Cruise Cpts: Chris & Sandy Benson Cruise Team: Dave & Mary Mehlum
Apr 11-13	Everett, WA	Business Meeting Cruise Theme To Be Announced	Cruise Cpts: Nat & Linda Collier Cruise Team: Jim and Cheryl Matheson, Dan and Raye Lohse, Doug Stewart, Gary Timm
May 1-4	Lake Washington Montlake Cut	Opening Day Boating Parade	Cruise Cpts: Glen and Liz Dodge
May 23-26	Longbranch Harbor	Memorial Weekend Cruise Wagon Wheel	Need Cruise Capt. Need Cruise Team Need Wheelmaster
June 13-15	Bainbridge Island YC Eagle Harbor, WA	Father's Day Cruise Theme To Be Announced	Cruise Cpts: John and Lyn Sipkens Cruise Team: Mark and Shari Pywell
July 1-4	Poulsbo - Liberty Bay	4th of July Wagon Wheel and Fireworks Spectacular	Need Cruise Capt. Need Cruise Team Need Wheelmaster
Aug 1-3	Roche Harbor Marina Roche Harbor, WA	Colors	Cruise Cpts: David and Janel Silver Cruise Team: John Hieber, Jon Edwards, and Holly Palmer
Aug 4-TBD	Follow the Fleet to Desolation Sound! Itinerary TBD by the Cruise Capt.	On the Move Progressive Cruise	Cruise Cpts: Tom & Chris Miner Need Cruise Team
Aug 29-Sept 1	Bremerton Marina, Bremerton, WA	Labor Day Cruise Blackberry Festival	Cruise Cpts: Debi and Phil Freund Cruise Team: Gloria and Pertis Johnson, Mike and Jan Croke
Oct 10-13	Pleasant Harbor	Columbus Day Cruise Theme To Be Announced	Need Cruise Capt. Need Cruise Team
Nov 1	Queen City YC 2608 boyer Ave E Seattle, WA 296-709-2000	Change of Bridge Commodore Ball	Cruise Cpts: Dave & Mary Mehlum
Nov 28-30	Port of Edmonds Marina	Thanksgiving Celebration	Unofficial do-it-yourself cruise. Make your own reservation(s) at Edmonds Marina, and Anthony's for dinner Saturday night. Note: no cruise captain or team required.

Want to host a RHYC Cruise ? Call Pete Jung @ 425-377-6392.
Or Email at linda.jung813@gmail.com

Current as of 3/19/2014

Upcoming Cruises



Join Club Roche for
The Annual Business
Meeting
April 11th to 13th



May 1st - 4th

Opening Day!



Montlake Cut

Raft Up

2014 RHYC BRIDGE CONTACT INFORMATION



Commodore

Dave Mehlum.....206-409-0713
(email address: commodore at rhyc dot org)

Vice Commodore / Membership Chairman

Bob Maruska.....425-821-7020
(email address: vicecommodore at rhyc dot org)

Rear Commodore / Outstations & Reciprocals

Glen Dodge.....425-396-3960
(email address: rearcommodore at rhyc dot org)

Fleet Captain

Pete Jung.....425-377-6392
(email address: fleetcaptain at rhyc dot org)

Secretary

Lynn Sipkens206-436-9217
(email address: secretary at rhyc dot org)

Treasurer

Michelle Nelson253-261-8288
(email address: miclellenelson at msn dot com)

Past Commodore / Trustee

Phil Freund.....360-275-4721
(email address: phil.freund at q dot com)

Ship's Store

Mary Mehlum.....425-281-1967
(email address: d-mmehlum at Comcast dot net)

Anchor Watch Editor: Lynn Sipkens.....lastmango1@yahoo.com

Visit our website www.rhyc.org

Webmaster: Roger Martindill Communications: Kim Nance



Roche Harbor Yacht Club

P.O. Box 94426 Seattle, WA 98124